
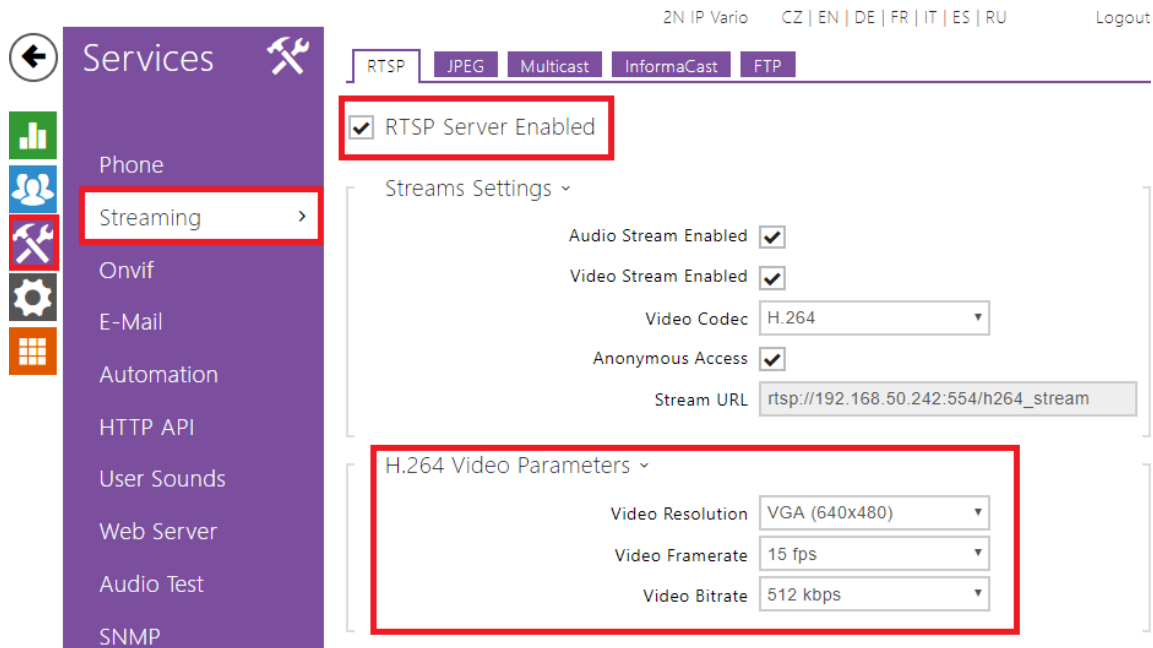


# VLC Player - How to watch a video from 2N® IP Intercom RTSP server

 Enhanced Video License required

## 2N® IP Intercom settings

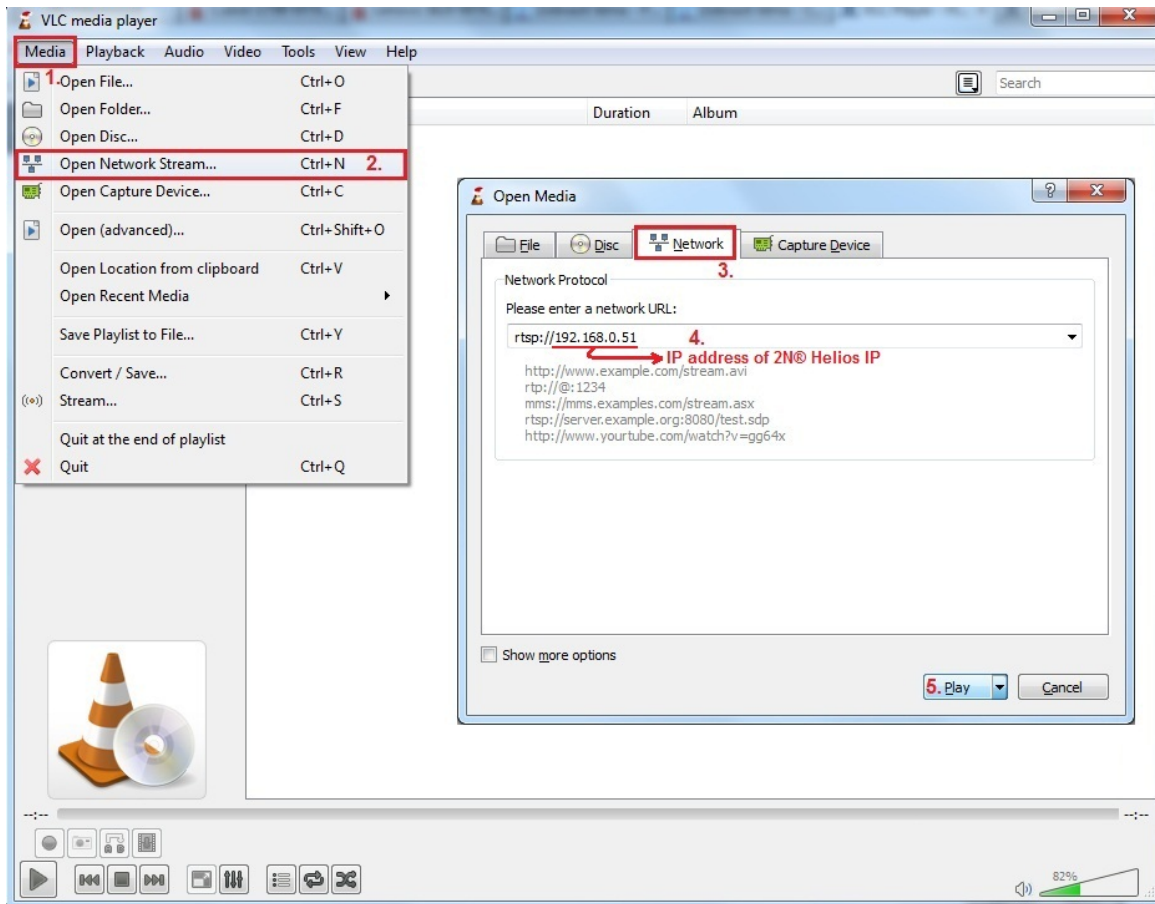
- First of all you have to set RTSP server and enable video, audio or booth – see picture below.
- If you do not fill in any IP address to "Allowed IP address X" fields then you will be able to watch the stream from any IP address (from any PC)
- If you fill some IP address into "Authorised IP address" field then you will be able to watch the stream only from that IP address
- Video resolution, frame rate, bitrate and size of video packets can be set as well - it is recommended to change it only if the video is not displayed correctly with default settings!



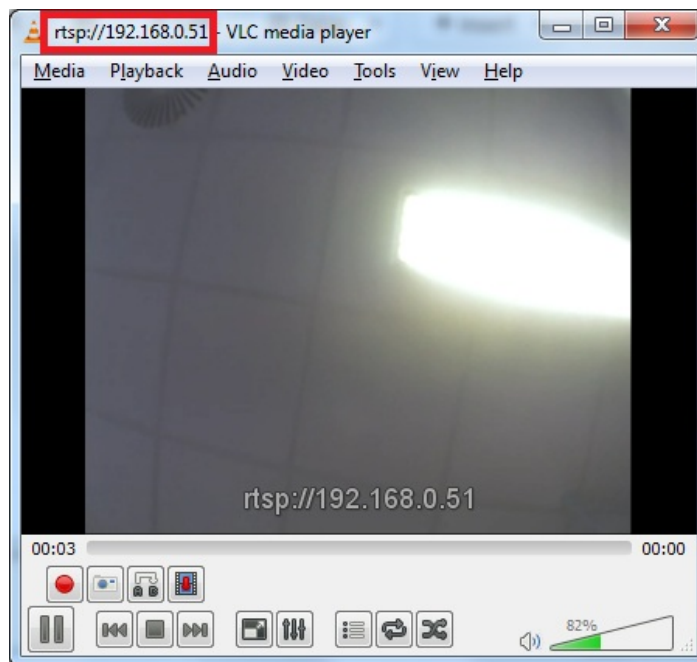
The screenshot shows the web interface for 2N IP Vario. The top navigation bar includes "2N IP Vario", language options (CZ | EN | DE | FR | IT | ES | RU), and a "Logout" link. Below the navigation bar, there are tabs for "RTSP", "JPEG", "Multicast", "InformaCast", and "FTP". The "RTSP" tab is active, and a red box highlights the "RTSP Server Enabled" checkbox, which is checked. Below this, the "Streams Settings" section is expanded, showing "Audio Stream Enabled" (checked), "Video Stream Enabled" (checked), "Video Codec" set to "H.264", "Anonymous Access" (checked), and "Stream URL" set to "rtsp://192.168.50.242:554/h264\_stream". At the bottom, the "H.264 Video Parameters" section is expanded, with a red box highlighting the "Video Resolution" (VGA (640x480)), "Video Framerate" (15 fps), and "Video Bitrate" (512 kbps) settings.

## VLC media player settings (version 2.0.5 Twoflower)

- Open your VLC media player and click on the "Media" tab on the top left corner. After that choose "Open Network Stream", go to section "Network" and fill in the IP address of 2N® IP Intercom. Do not forget to use "rtsp" protocol! All these steps are figured in the picture below.



- Finally click on the "Play" button and streaming will start. You should see a stream in new window.



- If not, please make a trace and send it with configuration and network topology description to technical support!

More product information:



Door & Security Intercoms (Official Website 2N)