

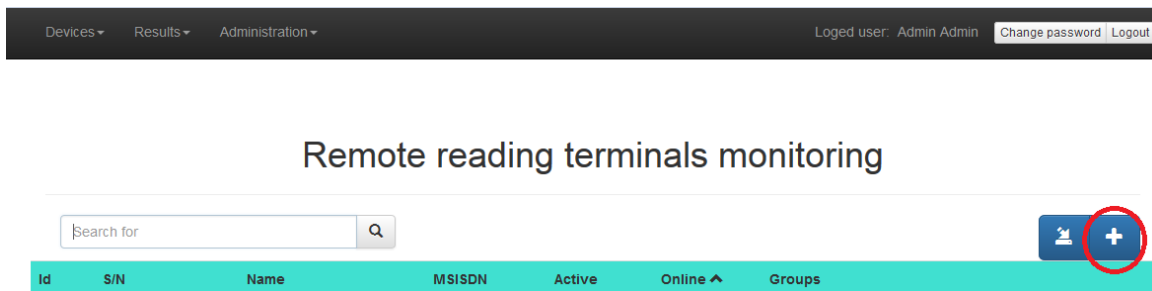
Test server with web interface - 2N® SmartCom server configuration

2N® SmartCom (further only abbreviated SmC) test server location:
Public IP address test-m2m.2n.cz or 90.182.112.38
Listening port 1561

- Install 2N® SmartCom control panel, which will let you connect with 2N® SmC server. www.2n.cz/download/6/0/0/8/2n-smartcom-control-panel-setup-1.12.0.12.19.zip

For the access data (login, password) please contact your salesman or send a request go to <https://support.2n.cz>.

Then run web browser, insert test-m2m.2n.cz and fill your logging parameters (login, password). Press "plus" button for add 2N® SmartCom terminal.



Fill all requested parameters and save with "OK" button.

Serial number – serial number of 2N®SmartCom PRO terminal

Name – user assigned name of 2N®SmartCom PRO terminals

Active - 2N®SmartCom PRO terminals status change (ON/OFF)

IMEI - International Mobile Equipment Identity

Description – the description assigned to the 2N®SmartCom PRO terminal by the user

Read Interval – the interval used for the data transfer from the 2N®SmartCom PRO terminal to the server. Example of 1h means the transfer is planned / performed exactly when the first sharp hour is reached and then every 60minutes

Read delay (minutes) – defines the time delay of the Read Interval from sharp hour. Can be used in case to be sure the 2N®SmartCom PRO terminal already get all the data from all the connected meters

AMS Readout interval - the interval used for the data readout by the 2N®SmartCom PRO terminal from the connected meters. Example of 1h means the transfer is planned / performed exactly when the first sharp hour is reached and then every 60minutes

Add new SmartCom PRO terminal

Serial number

50-0663-0027

Name

Test 2N

SMC server password

12345

Active

On

IMEI

Description

Read interval

1h

Read delay (minutes)

0

AMS readout interval

1m

Your 2N® SmartCom is now in section "Terminals Monitoring". Unit is offline now.

0027	
Id	S/I
34	50

Configure your 2N® SmartCom unit. You can use software 2N® Terminal config or AT commands via hyperterminal (eg. putty)

Mode: TCP Client

GPRS APN: APN used for the GPRS/UMTS connectivity access

GPRS user: GPRS User used for the GPRS/UMTS connectivity access

GPRS password: Password for the GPRS User used for the GPRS/UMTS connectivity access

Server IP address: 2N® SmartCom server IP address where the 2N® SmartCom PRO terminal is connecting

Server port: 2N® SmartCom server port where the 2N® SmartCom PRO terminal is connecting

PIN: SIM card PIN code

Password: 2N® SmartCom PRO terminal password used for SMS configuration and 2N® SmartCom server authorization

Parameters

General Ethernet RS-232 RS-485/M-bus WM-bus Error buffer Owr

Mode:

GPRS APN:

GPRS user:

GPRS password:

Server IP address:

Server port:

PIN:

Password:

Autoanswer RING count 0=off


Press "Save and restart" button and your 2N[®] SmartCom will connect to 2N[®] SmC server.

Refresh your web browser by "F5". Unit is online and connected to 2N[®] SmC server

Remote re

Id	S/N	Name	MSISDN
34	50-0663-0027	Test_Tomas	

Then run 2N[®] SmartCom control panel, fill in the generated Login and Password, Server Address 90.182.112.38 or test-m2m.2n.cz, Port 1561



User Account

Login

Password

Server Settings

Server Address

Port

Version: 1.12.0.12.19 Protocol: 7

Confirm "Sign In"

User mode

- Terminals
- Connections
- Virtual Ports
- Settings

Admin mode

- Users
- User Groups
- Links
- Terminals
- Server Settings
- Firmware Management

Sign Out

Version: 1.12.0.12.19 Protoc: Current user: Admin Terminals: 1 of 10 Ports: 4 Server: test-m2m.2n.cz Server port: 1561 Status: Connected

In the page "Terminals", you can also set parameters of RS232/RS485,MBUS

Search

Name	Serial	Config
test123	50-053	0/3
test169	50-106	0/3
test123	50-103	0/3
Peter_A	50-070	0/0
bosco	50-106	0/3
testchar	50-057	0/3
repeate	50-082	0/3
repeate	50-082	0/3
gerard	15-666	0/3
50-066	50-066	0/3

Terminal Details

Name: 50-0663-0027
 Serial number: 50-0663-0027
 Type: SmartCOM PRO ETH
 HW revision: 2
 Relay count: 2
 D input count: 2
 A input count: 2
 W-MBus module count: 1
 Description:

Terminal Ports

1 : RS-232	None
2 : M-BUS	None
0 : CONFIG	None

Port Settings

Baudrate: 2400
 Data bits: 8
 Parity: EVEN
 Stop bit: 1

M - Bus data readout with 2N[®] SmC server

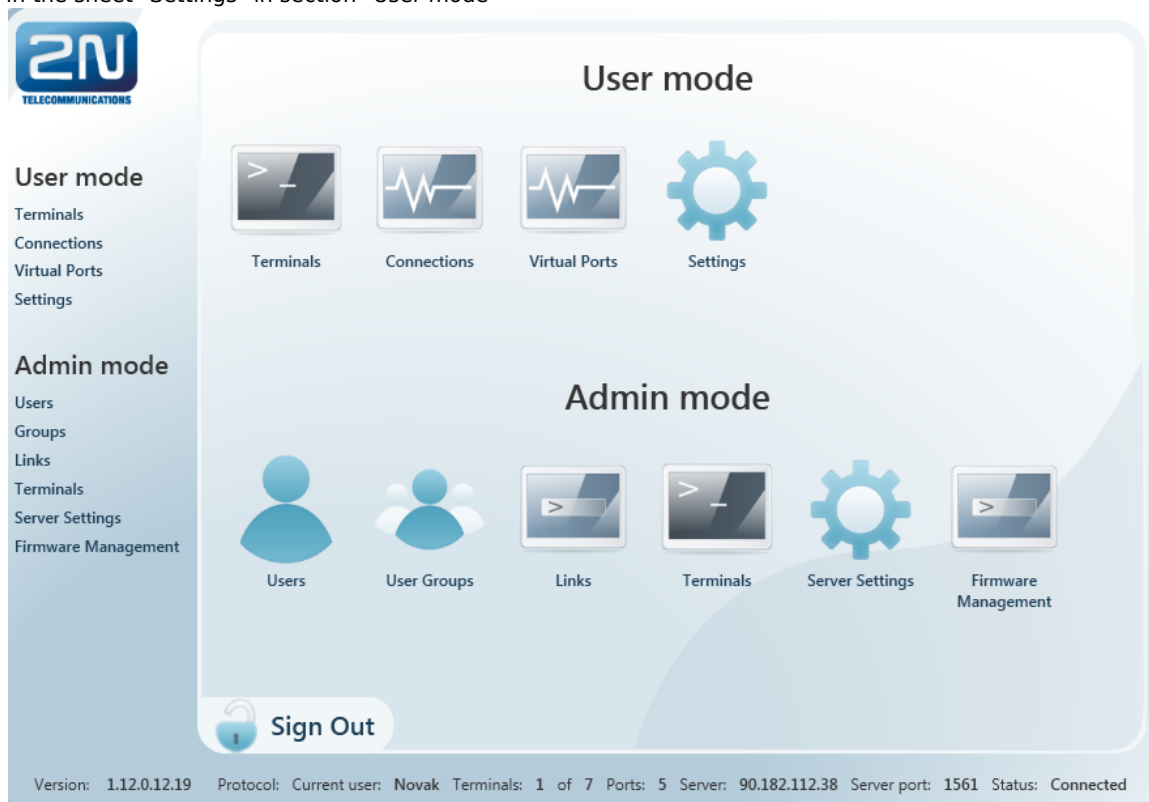
If you use 2N[®] SmartCOM PRO supporting **AMS function**, then 2N[®] SmC server with web interface can readout units and parse M-Bus messages.

With special FW you can simply detect M-Bus meters by SMS

The easiest is use firmware (**SCE_1-12-0-12-252**). Performing this command deletes all the data from 2N@SmartCom PRO terminal memory as well as the meter reading configuration part. All the connected meters during the SMS processing will be available for the readout. The parameter interval is global for all installed meter by SMS.

How to use Virtual ports

After successful connection is the next important step to install null-modem emulator com0com. You can install it in the sheet "Settings" in section "User mode"

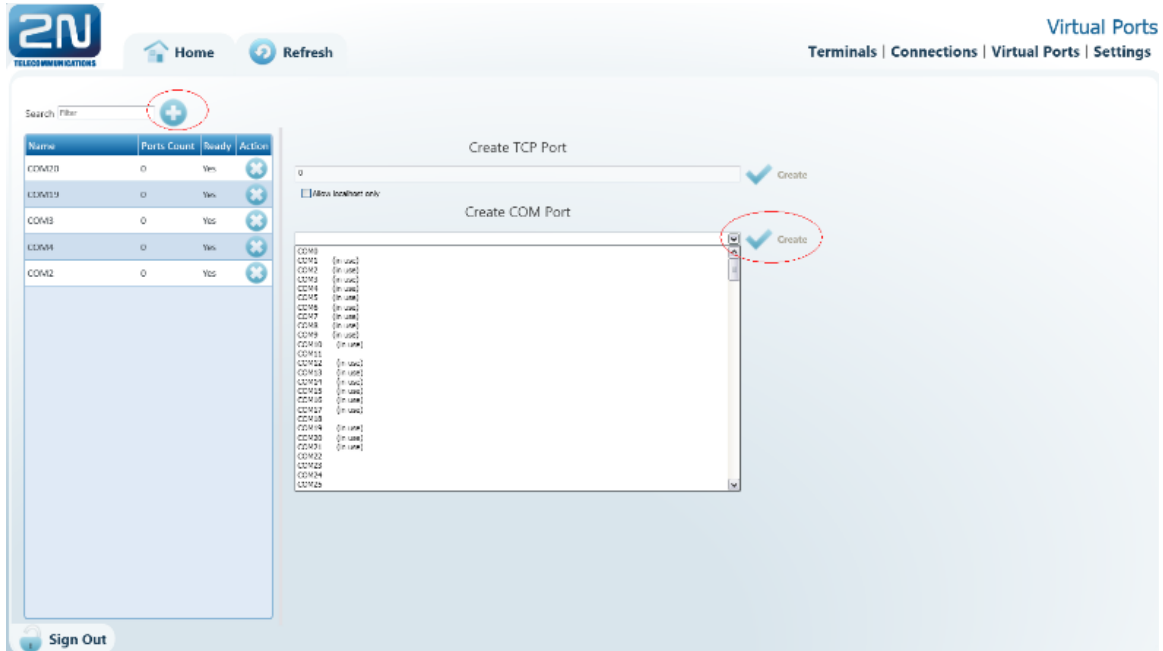


The screenshot displays the web interface of the 2N SmC server. It is divided into two main sections: "User mode" and "Admin mode".

- User mode:** Contains four icons: "Terminals" (terminal window), "Connections" (heartbeat line), "Virtual Ports" (heartbeat line), and "Settings" (gear icon).
- Admin mode:** Contains six icons: "Users" (person icon), "User Groups" (group of people icon), "Links" (terminal window), "Terminals" (terminal window), "Server Settings" (gear icon), and "Firmware Management" (terminal window).

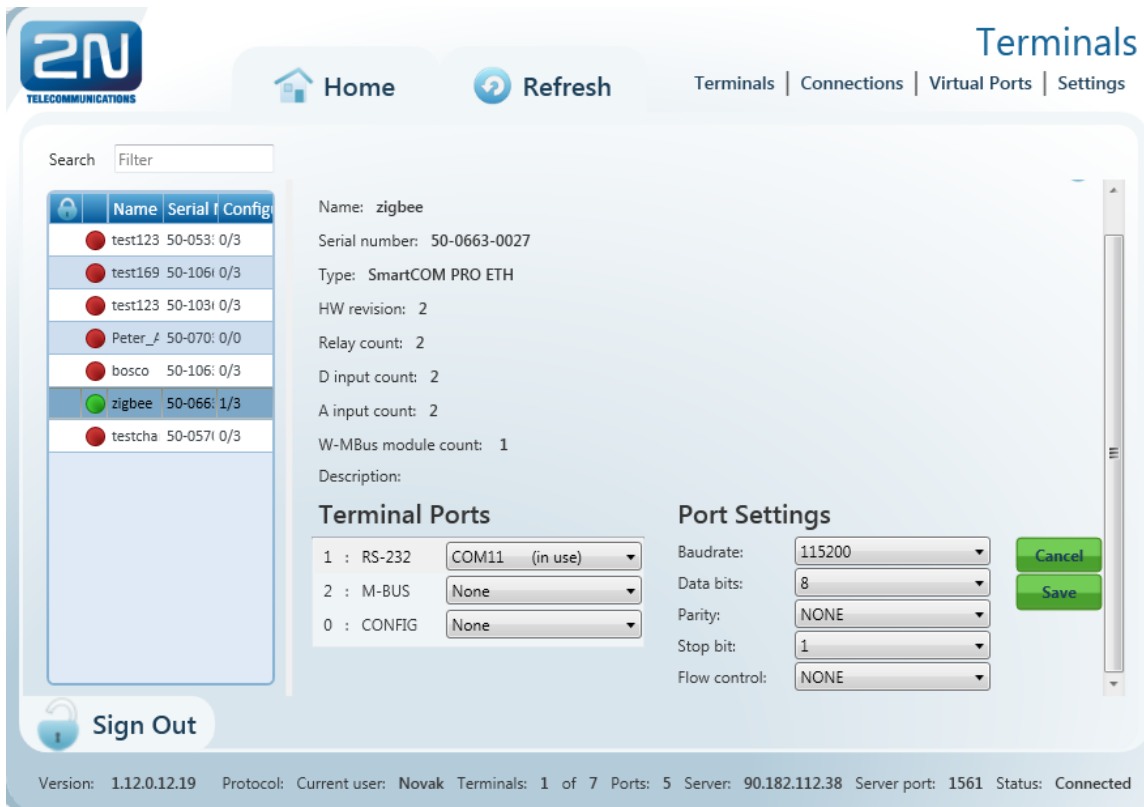
A "Sign Out" button is located at the bottom left of the interface. At the bottom, a status bar shows: "Version: 1.12.0.12.19 Protocol: Current user: Novak Terminals: 1 of 7 Ports: 5 Server: 90.182.112.38 Server port: 1561 Status: Connected".

In the tab "Virtual ports" add by button PLUS new virtual ports and confirm all by "Create"



In the tab "Terminals" in section "User mode"

you can choose COM port. Further you can set parameters RS232/RS485



In the tab "Connections" you can download the data by pressing "Start".



2N TELECOMMUNICATIONS

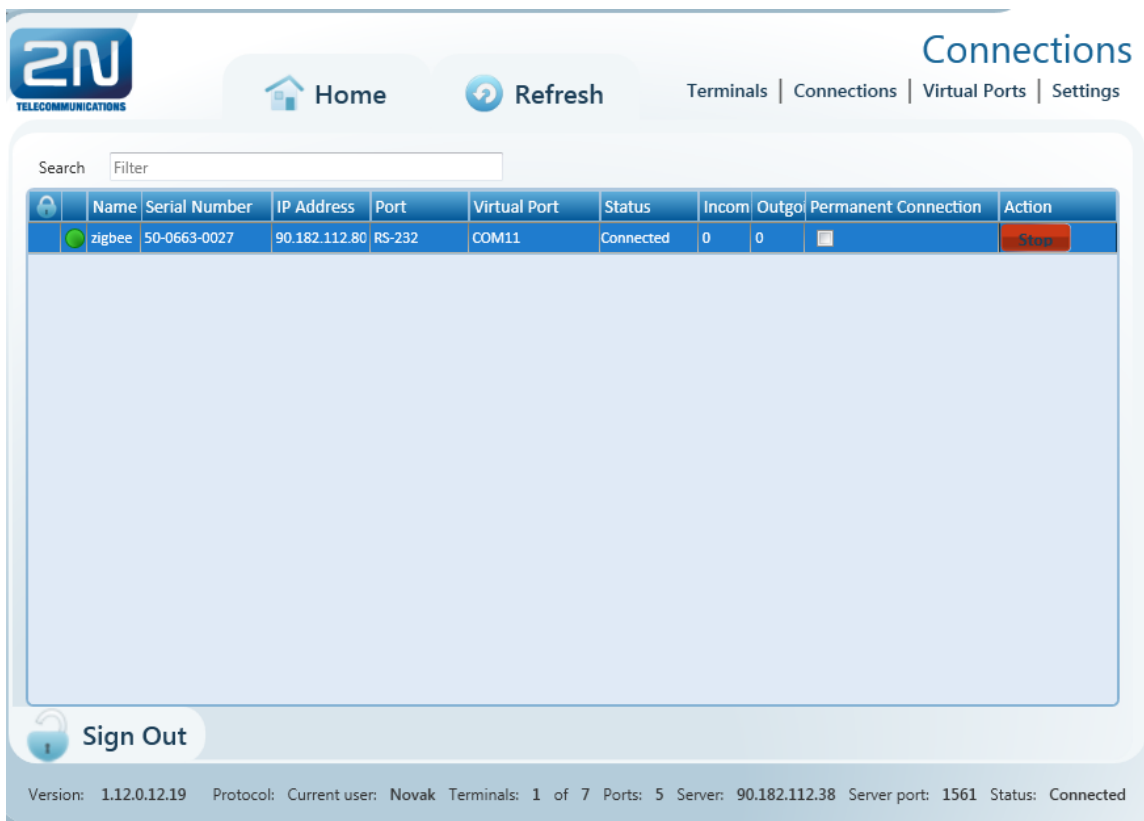
Home Refresh Terminals | Connections | Virtual Ports | Settings

Search Filter

Name	Serial Number	IP Address	Port	Virtual Port	Status	Incom	Outgo	Permanent Connection	Action
zigbee	50-0663-0027	90.182.112.80	RS-232	COM11	Not Connected	0	0	<input type="checkbox"/>	Start

Sign Out

Version: 1.12.0.12.19 Protocol: Current user: Novak Terminals: 1 of 7 Ports: 5 Server: 90.182.112.38 Server port: 1561 Status: Connected



2N TELECOMMUNICATIONS

Home Refresh Terminals | Connections | Virtual Ports | Settings

Search Filter

Name	Serial Number	IP Address	Port	Virtual Port	Status	Incom	Outgo	Permanent Connection	Action
zigbee	50-0663-0027	90.182.112.80	RS-232	COM11	Connected	0	0	<input type="checkbox"/>	Stop

Sign Out

Version: 1.12.0.12.19 Protocol: Current user: Novak Terminals: 1 of 7 Ports: 5 Server: 90.182.112.38 Server port: 1561 Status: Connected

Right

now, you have successfully set that data will be transferred to the COM11 port of your PC. You have to set up further details in your application. After that is the application able to read the data, example



Troubleshooting:

Test 2N® SmartCom (PRO) - Terminal error buffer code description

More product information:

2N® SmartCom (Official Website 2N)

2N® SmartCom PRO (Official Website 2N)